

INCASSO CHIUSO 12W LED 3000K

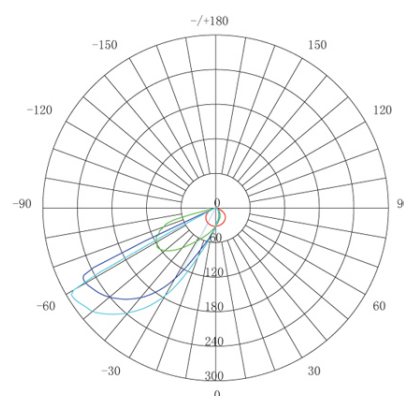
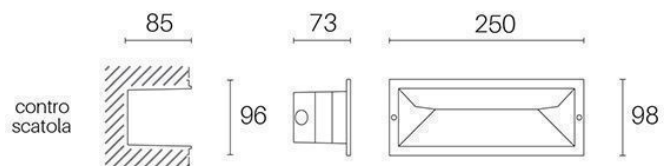
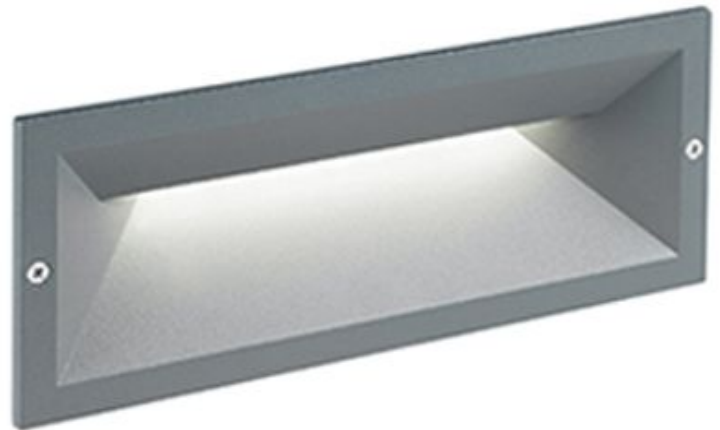
Serie: MASK

Art. 98152/16

EAN 8020588825668

Colore: Grafite

Incasso in alluminio pressofuso.
Diffusore in termoplastico opalino.
Controscatola in termoplastico.
Consumo: 12W.
Flusso luminoso nominale: 1390 lumen.
Flusso luminoso reale: 700 lumen.
Classe di efficienza energetica: F
Temperatura di colore: 3000°K. Luce calda.
Illuminazione con 12 LED SMD 3030.
Alimentazione: 230V.
Grado di protezione: IP65



| Height | Eavg, Emax | Angle: 34.99 deg | Diameter |
|--------|----------------|------------------|----------|
| 1 m | 32.88, 68.14lx | | 63.04cm |
| 2 m | 8.219, 17.03lx | | 126.07cm |
| 3 m | 3.653, 7.571lx | | 189.11cm |
| 4 m | 2.055, 4.259lx | | 252.14cm |
| 5 m | 1.315, 2.726lx | | 315.18cm |

UNIT: cd
 — C0/180, 120.1
 — C30/210, 47.7
 — C60/240, 36.4
 — C90/270, 35.0