

INCASSO CHIUSO 12W LED 4000K

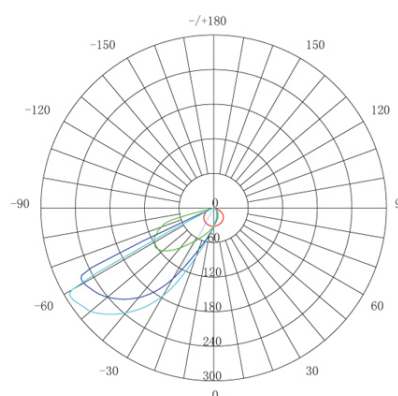
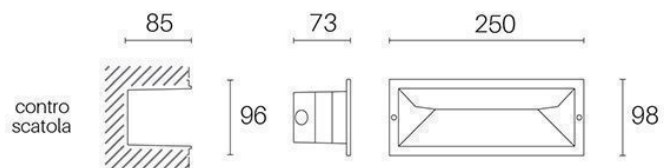
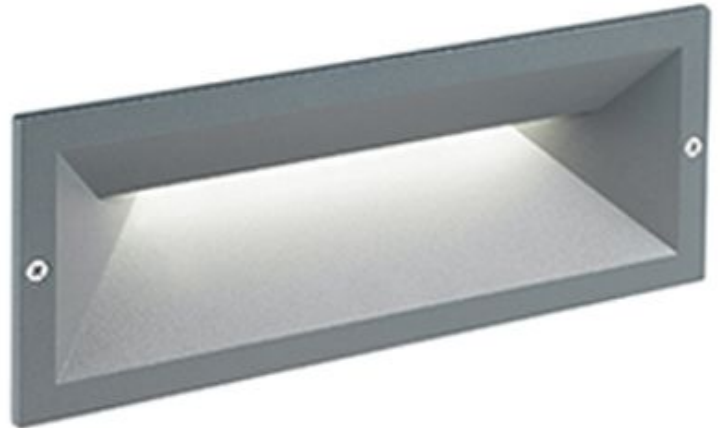
Serie: MASK

Art. 99152/16

EAN 8020588848483

Colore: Grafite

Incasso in alluminio pressofuso.
Diffusore in termoplastico opalino.
Controscatola in termoplastico.
Consumo: 12W.
Flusso luminoso nominale: 1585 lumen.
Flusso luminoso reale: 710 lumen.
Temperatura di colore: 4000°K. Luce naturale.
Illuminazione con 12 LED SMD 3030.
Alimentazione: 230V.
Grado di protezione: IP65



Height	Eavg, Emax	Angle: 34.99 deg	Diameter
1 m	32.88, 68.14lx		63.04cm
2 m	8.219, 17.03lx		126.07cm
3 m	3.653, 7.571lx		189.11cm
4 m	2.055, 4.259lx		252.14cm
5 m	1.315, 2.726lx		315.18cm

UNIT: cd
 — C0/180, 120.1
 — C30/210, 47.7
 — C60/240, 36.4
 — C90/270, 35.0